



Family Development Matrix Report

2011-2012

Erika Felix, PhD

Jennica Rebelez, MED

Antoniya Terzieva, BA

University of California, Santa Barbara

Introduction

Family Strengthening (FS) partners monitored the growth of case managed families across several important family functioning domains using the Family Development Matrix (FDM). Providers interviewed families and rated their functioning across the items assessed on a 4-point scale from “In Crisis” to “Safe/Self-Sufficient.” The FDM is more than an evaluation tool; it is a case management system that provides suggestions for interventions based on family needs. More information on the FDM is available at:

<http://matrixoutcomesmodel.com/familymatrix.htm>. This report summarizes the results for families that received case management services from a First 5 Santa Barbara County-funded Family Resource Center in FYs 2009-2012.

In the first section, results are displayed for the families who completed two FDM assessments—at intake and a first follow-up. In the second section, results are shown for families who had a second follow-up (e.g., assessment 3). Only a subset of families, perhaps those with more chronic problems, remained in case management for a second follow-up. In the third section, we group the individual indicators into the four main categories they represent: *Access to Services*, *Parenting*, *Basic Needs*, and *Emotional Health*. In this report, we indicate if a result was “statistically significant” or not. If a difference over time is statistically significant, that means it is unlikely to be due to chance, and more likely due to the services or interventions received. If it is not statistically significant, then it means that families are functioning about the same as they did at intake.

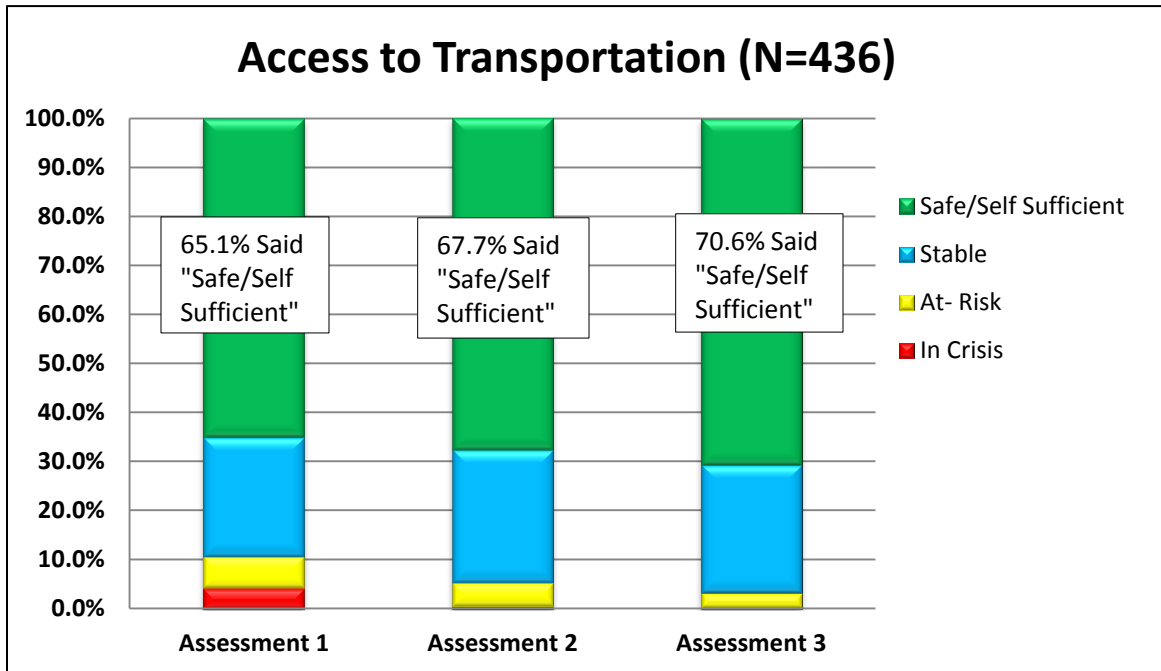
Section I: Changes in Functioning for Families from Assessment 1 to 2

Family Development Matrix: Comparison of Change in Average Scores from Assessment 1 to 2 (N= 817)				
Indicator	Average Score Assessment 1	Average Score Assessment 2	Direction of Change	Statistical Significance
Access to Transportation	3.46	3.60	↑	<0.001**
Child Health Insurance	3.39	3.64	↑	<0.001**
Community Resources/Knowledge	2.71	3.26	↑	<0.001**
Health Services	3.17	3.29	↑	<0.001**
Budgeting	2.90	3.10	↑	<0.001**
Clothing	3.07	3.29	↑	<0.001**
Employment	1.96	2.03	–	0.061
Child Care	2.43	2.52	–	0.067
Risk of Emotional or Sexual Abuse	3.55	3.63	↑	0.046*
Child Supervision	3.76	3.76	–	0.937
Appropriate Development	3.27	3.43	↑	<0.001**
Nutrition	3.63	3.77	↑	<0.001**
Family Communication Skills	3.41	3.42	–	0.833
Emotional Well- being/Sense of Life Value	3.21	3.36	↑	<0.001**
Nurturing	3.58	3.66	↑	0.004**
Parenting Skills	3.36	3.45	↑	0.002**
Home Environment	3.67	3.73	↑	<0.001**
Stability of Home/Shelter	3.57	3.64	↑	0.001**
Support System	3.15	3.33	↑	<0.001**
Presence of Substance Abuse	3.71	3.77	↑	0.001**

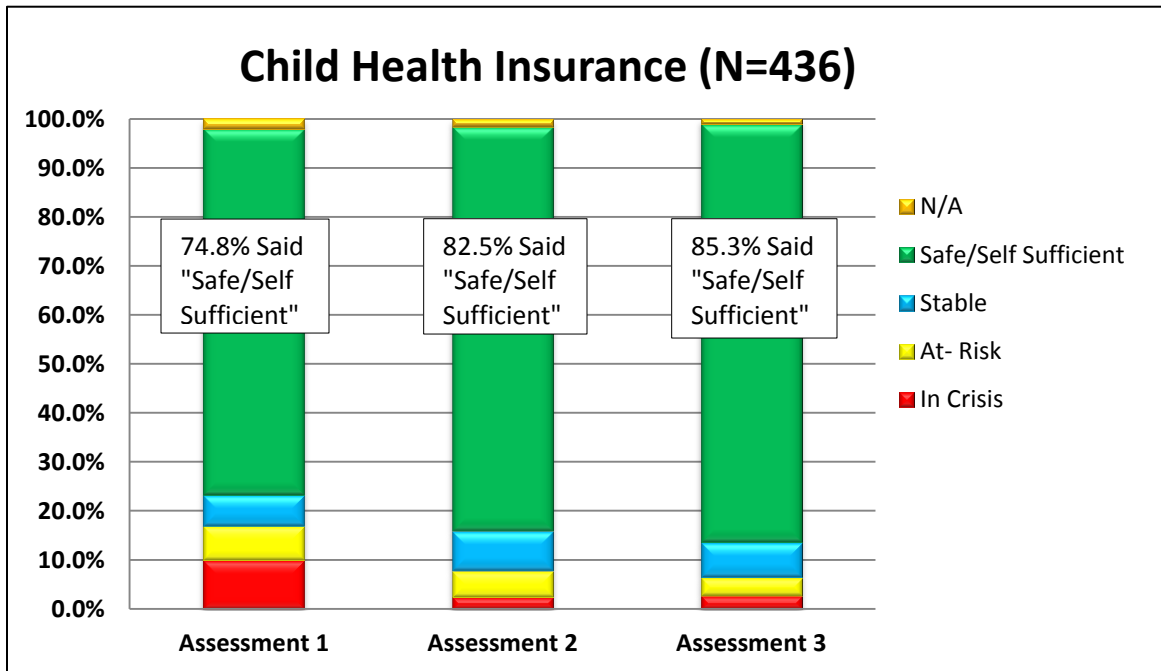
**denotes significance at $p < .001$; * indicates significance at $p < .05$

- Overall, average scores significantly increased from assessment 1 to assessment 2 for nearly all FDM indicators. This suggests families improved their functioning in those areas assessed.
- Families remained at similar levels of functioning for Employment, Child Care, and Supervision, across assessment 1 and 2.

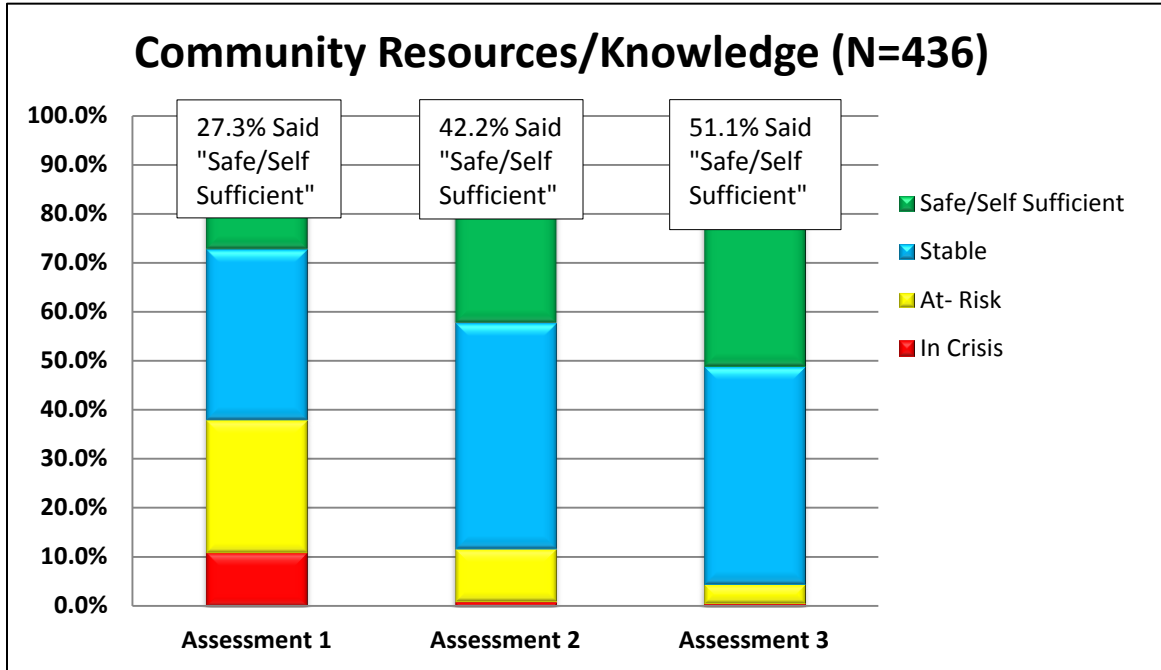
Section II: Changes in Functioning for Families with Three Assessments



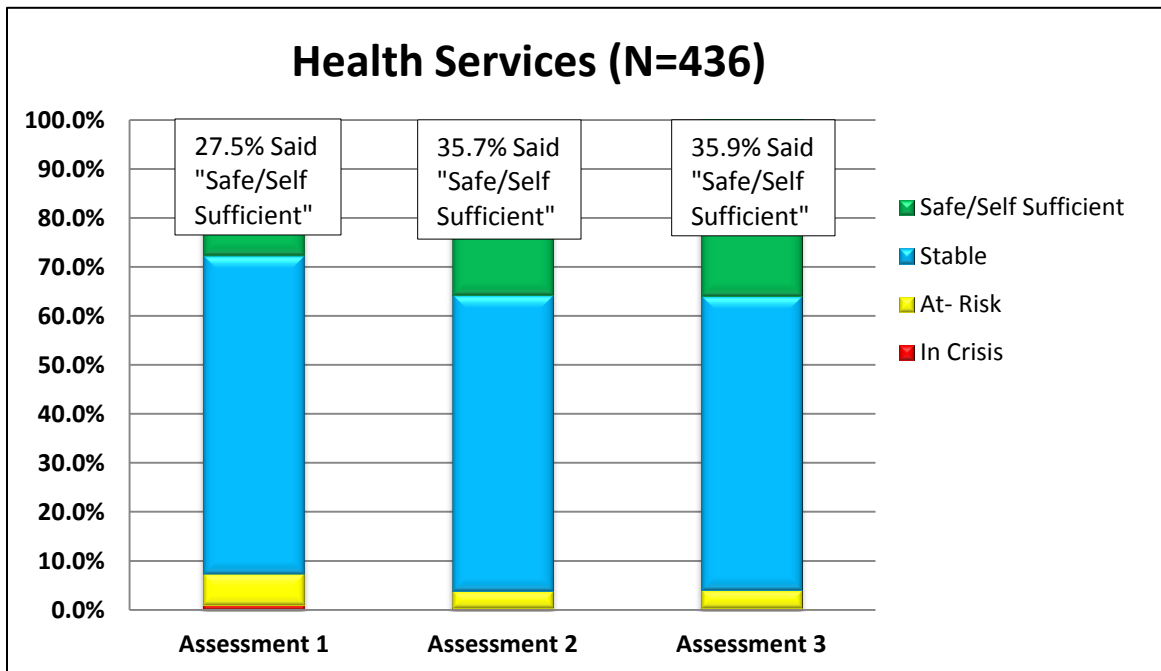
- Overall, statistically significant increases in the percentage of families who reported having “safe/self-sufficient” access to transportation was observed across the three FDM assessments. An increasing majority of respondents indicated that they have a consistent and dependable source of transportation.



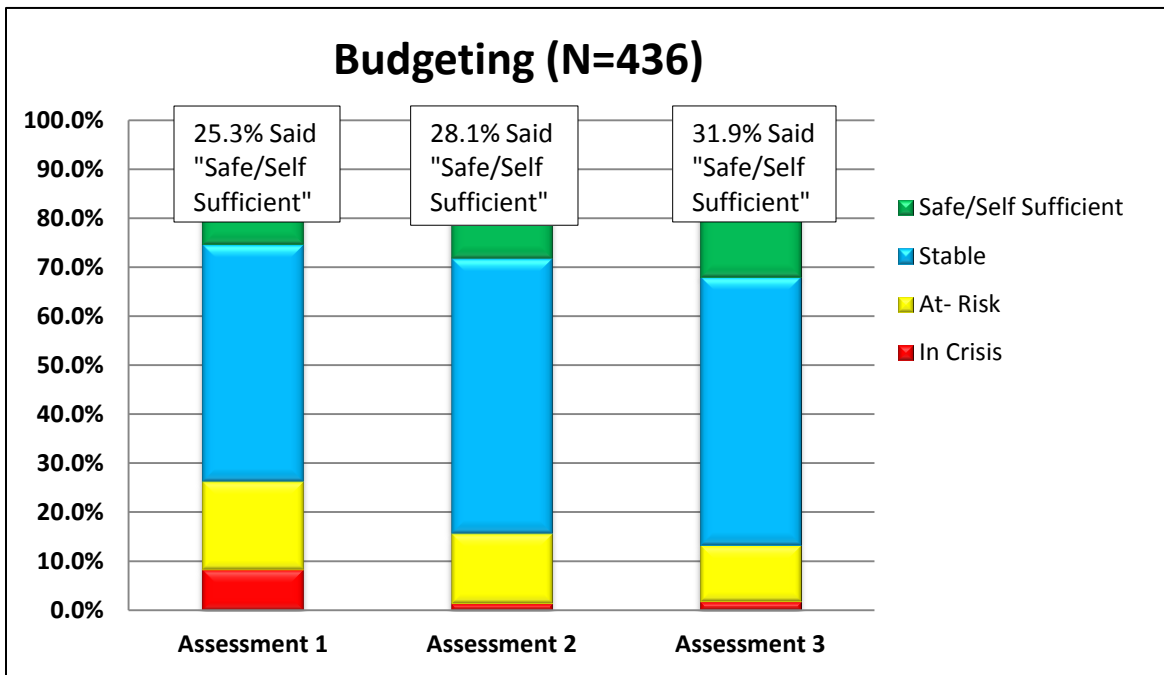
- Statistically significant increases were observed in the percentage of families who reported having “Safe/Self Sufficient” access to child health insurance between assessment 1 and assessment 3. In general, the majority of families reported that their children have adequate health insurance coverage.



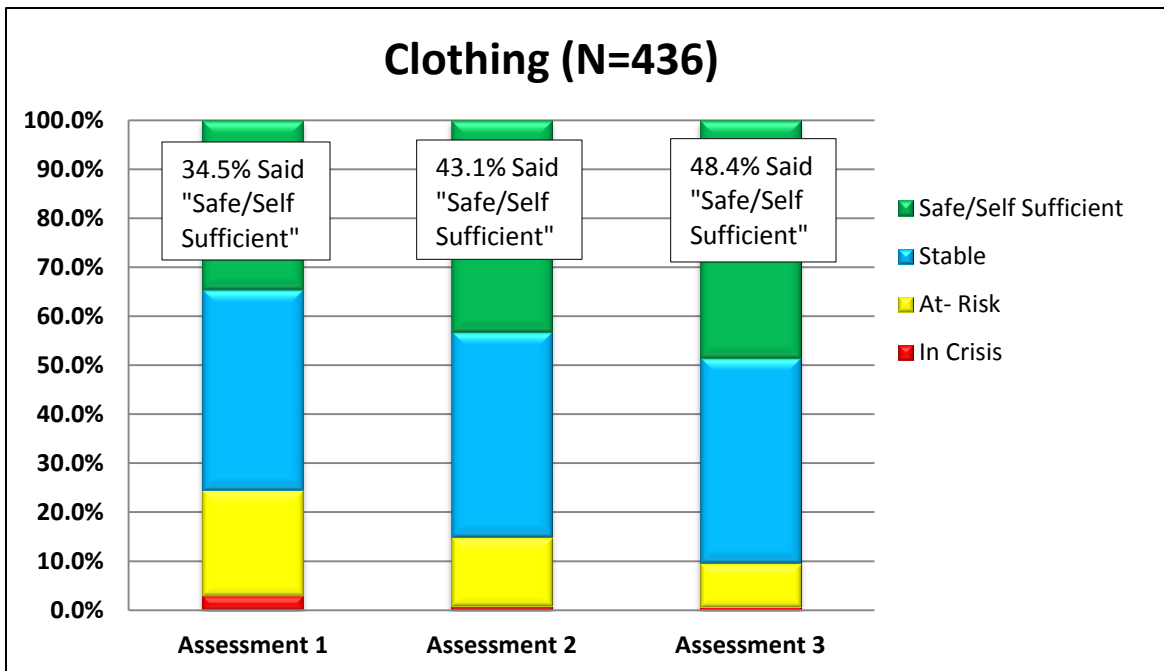
- Across each of the 3 assessment periods, statistically significant and steady improvements in the percentage of families who reported having “safe/self-sufficient” knowledge of community resources were observed. Most participants reported that they were aware of community resources or were currently participating in those programs.



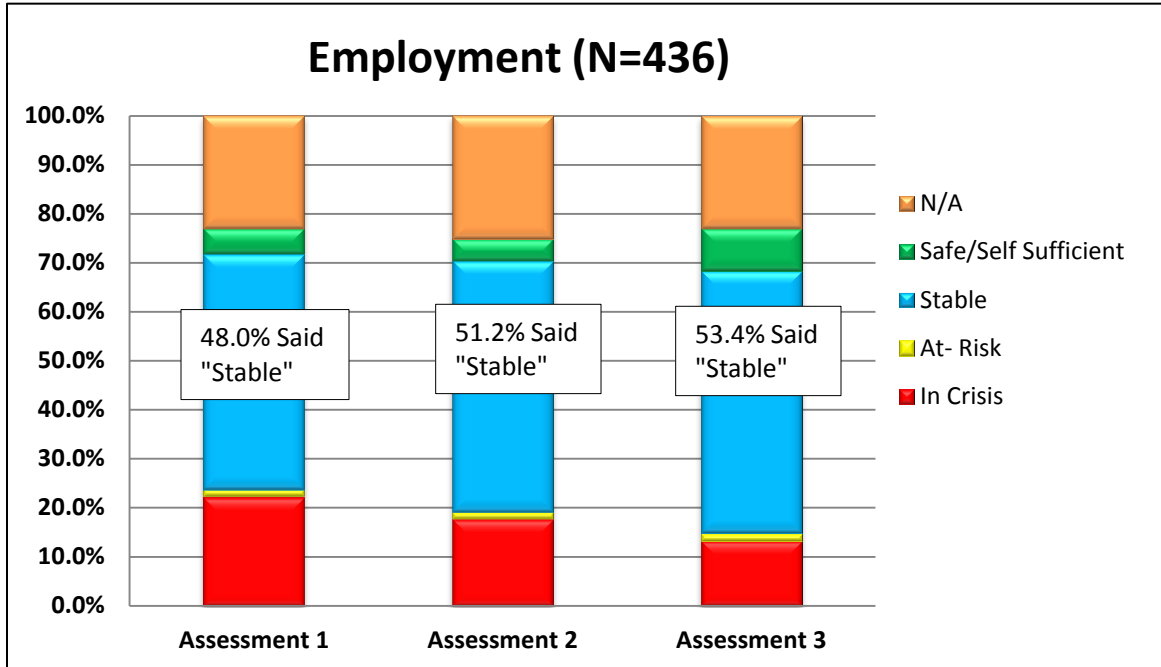
- Between assessment 1 and assessment 3, statistically significant increases in the percentage of families who reported having “safe/self-sufficient” access to health services, were observed. Majority of respondents reported that they seek medical attention when needed (“stable”).



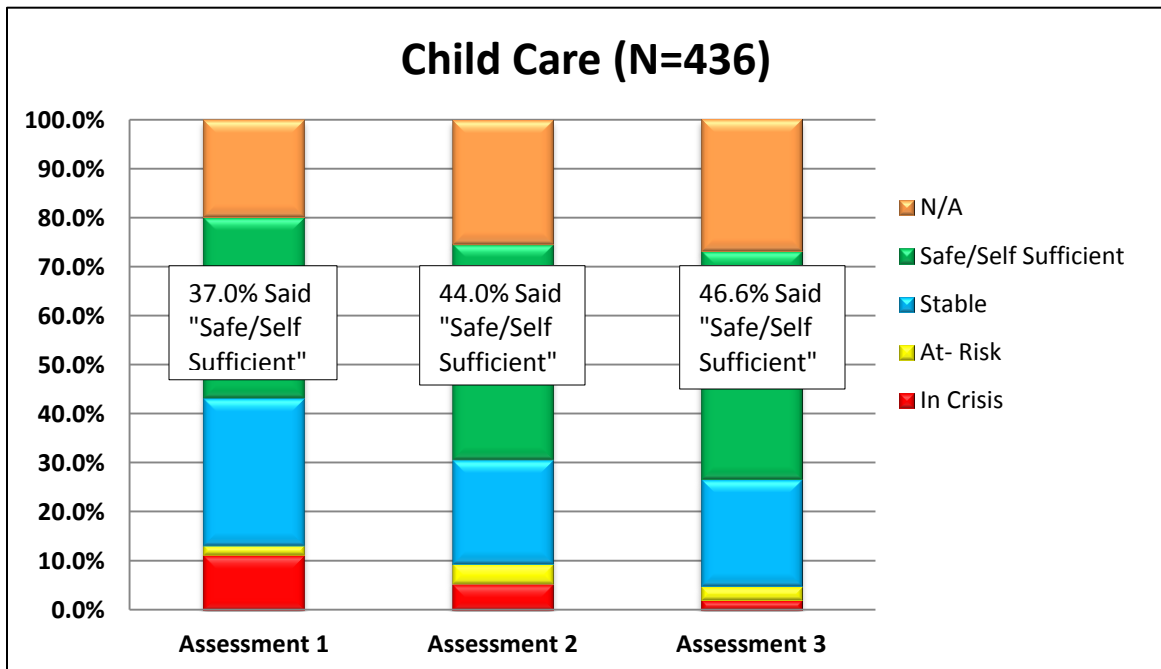
- Between assessment 1 and assessment 3, statistically significant increases in the percentage of families who reported using monthly budgets/resources to help with budgeting, were observed. Overall, most families reported having the skills to plan monthly budgets and are aware of additional resources that could assist in this process.



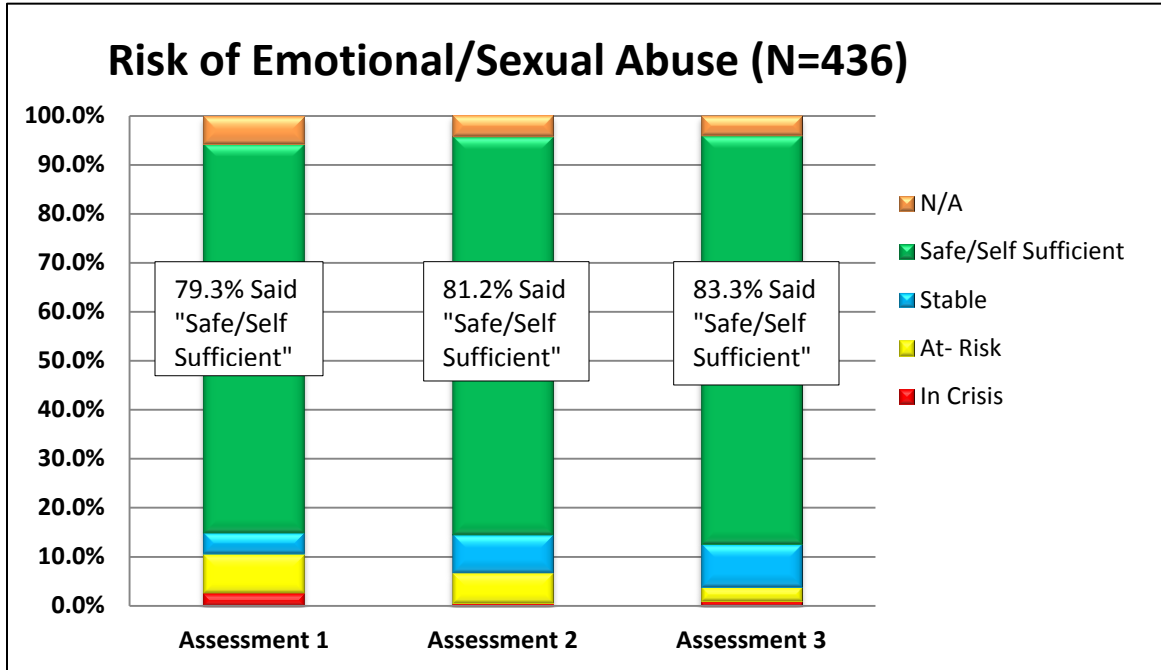
- Across the three assessment periods, increases in the percentage of families who reported having “safe/self-sufficient” access to clothing, were observed. That is, most families indicated that they had adequate and appropriate clothing for school and work.



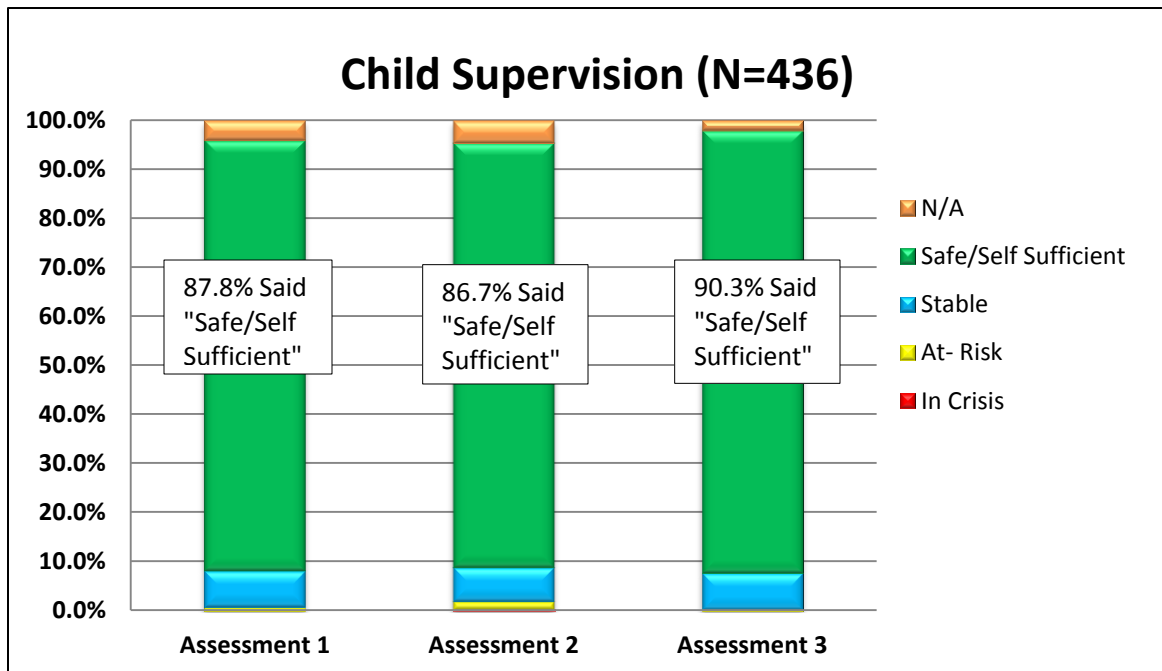
- Statistically significant increases in the percentage of families who reported having “stable” employment were observed across each of the three assessment periods. That is, by the third assessment period, slightly more than half of respondents indicated that they were employed.



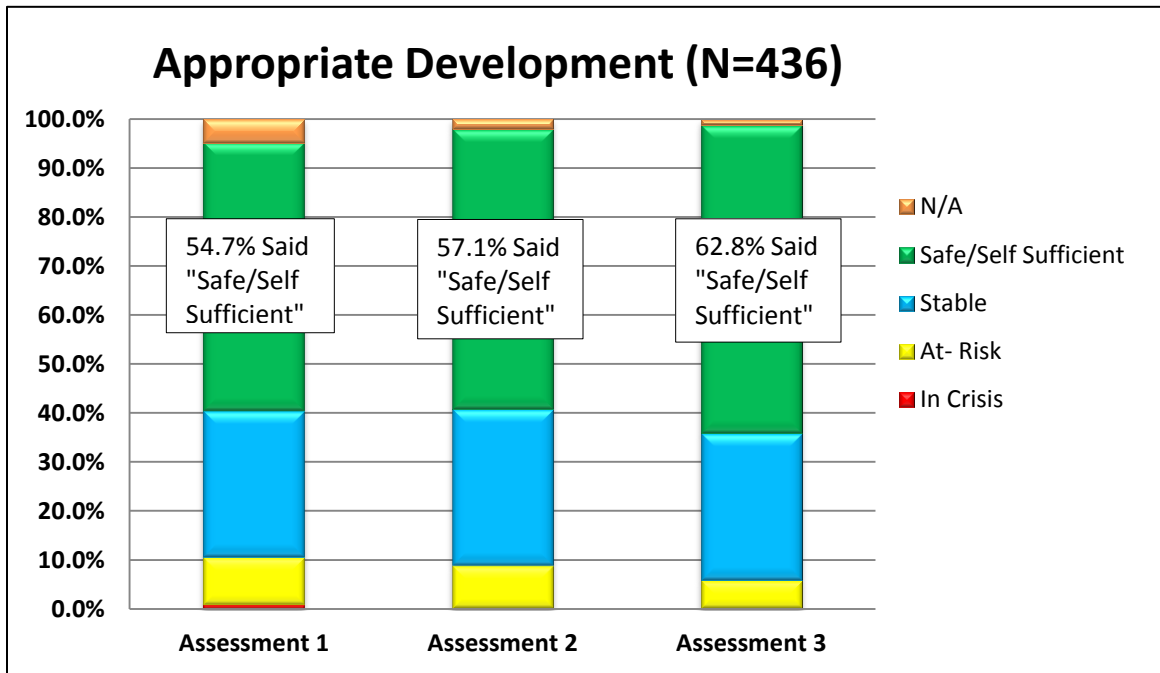
- Although no statistically significant gains in access to child care were observed, more than half of families responded having access to either dependable or high-quality child care programs at each assessment period.



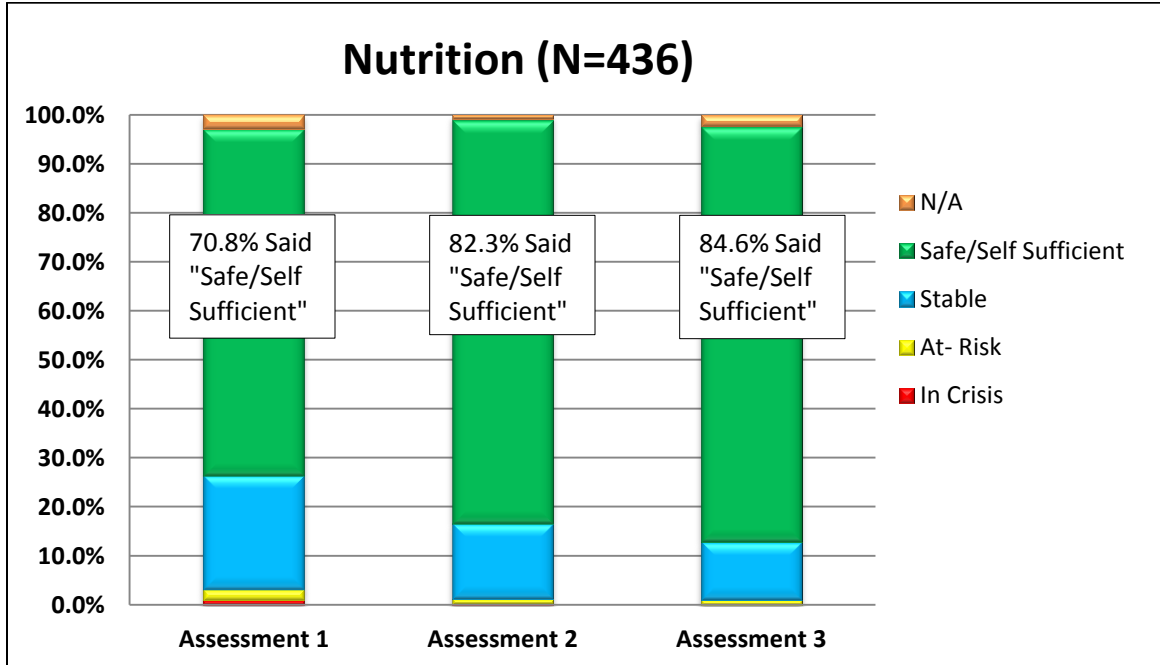
- From assessment 1 to assessment 3, statistically significant increases in the percentage of families indicating that their children were “safe” from risk of physical, emotional, and sexual abuse, was observed. In addition, the families that were in crisis at assessment 1 were no longer in crisis at follow-up.



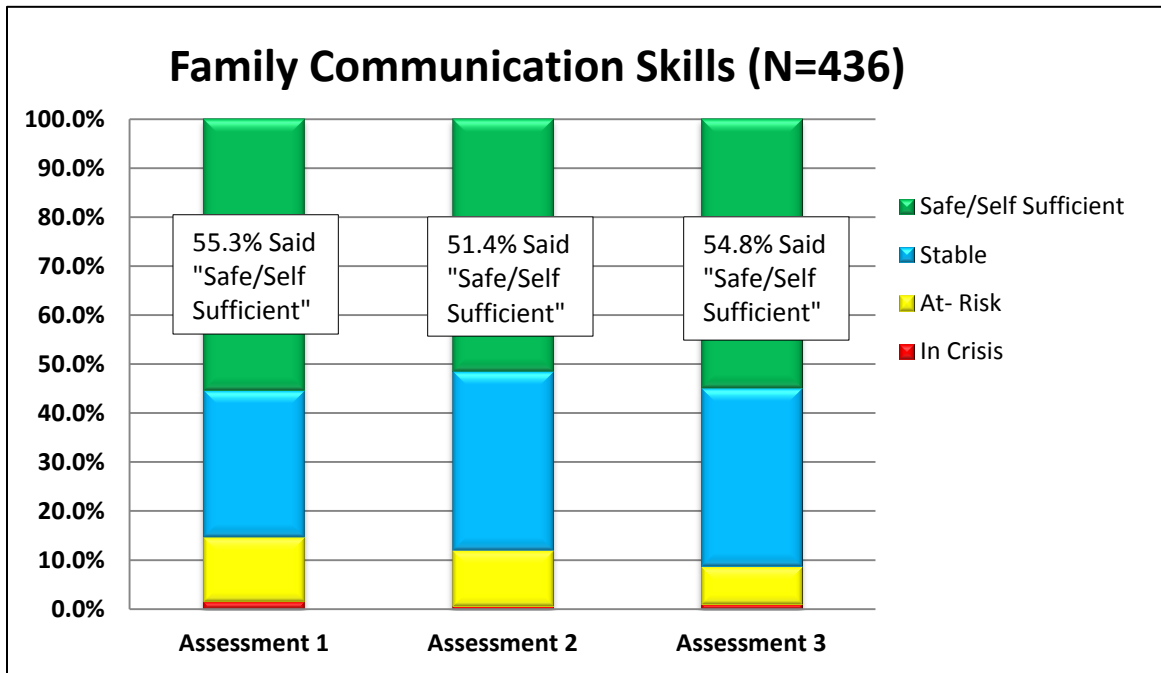
- Statistically significant increases in the percentage of families reporting “safe/self-sufficient” child supervision was observed across each of the three assessment periods. That is, the large majority of families indicated that their children are always supervised by a trusted adult.



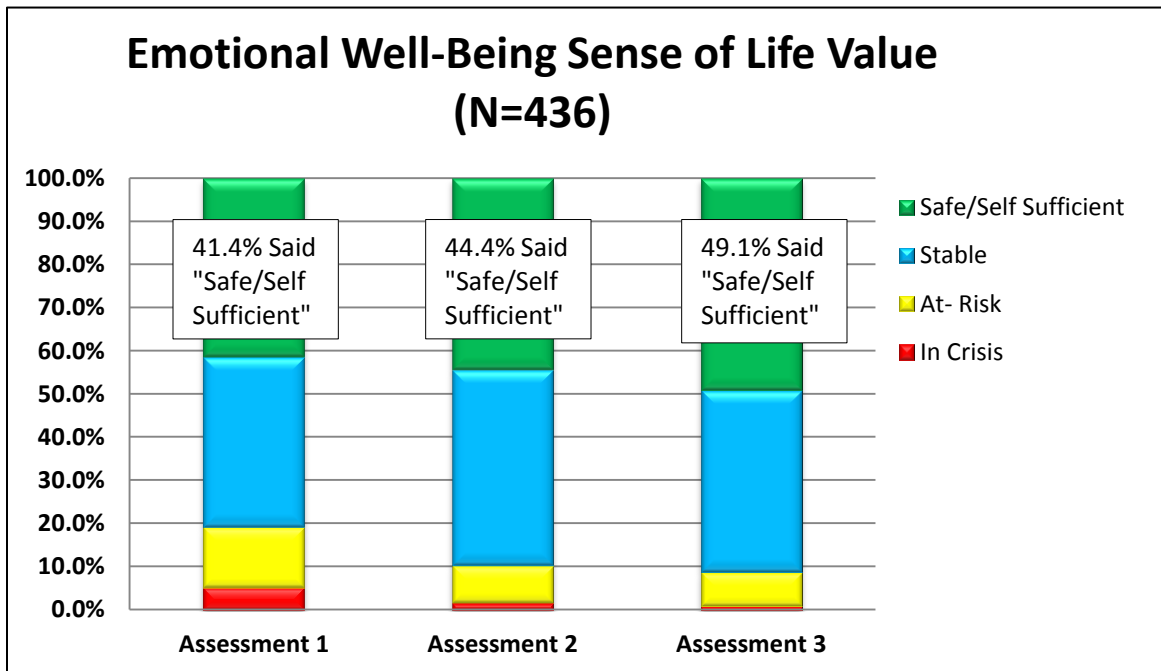
- Statistically significant gains in the percentage of families reporting “safe/self-sufficient” child development were observed between each of the three assessment periods. The majority of respondents indicated that their children are meeting their developmental milestones at an appropriate pace.



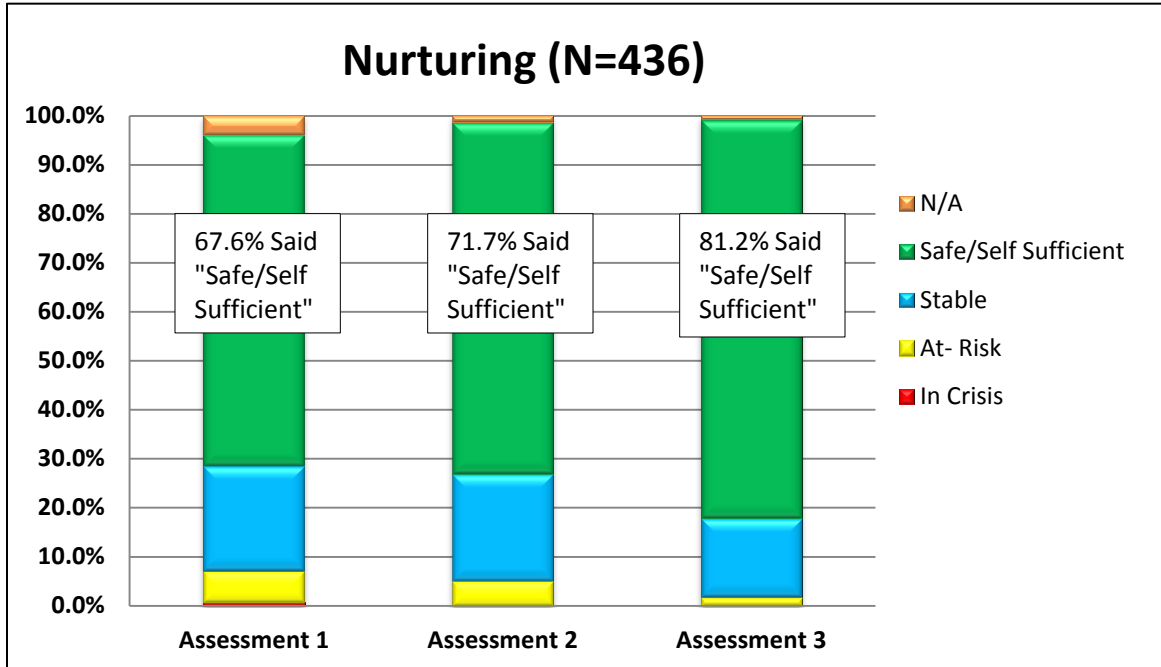
- Between assessment 1 and assessment 3, statistically significant increases in the percentage of families reporting having “safe/self-sufficient” amounts of nutritious food for their children, were observed.



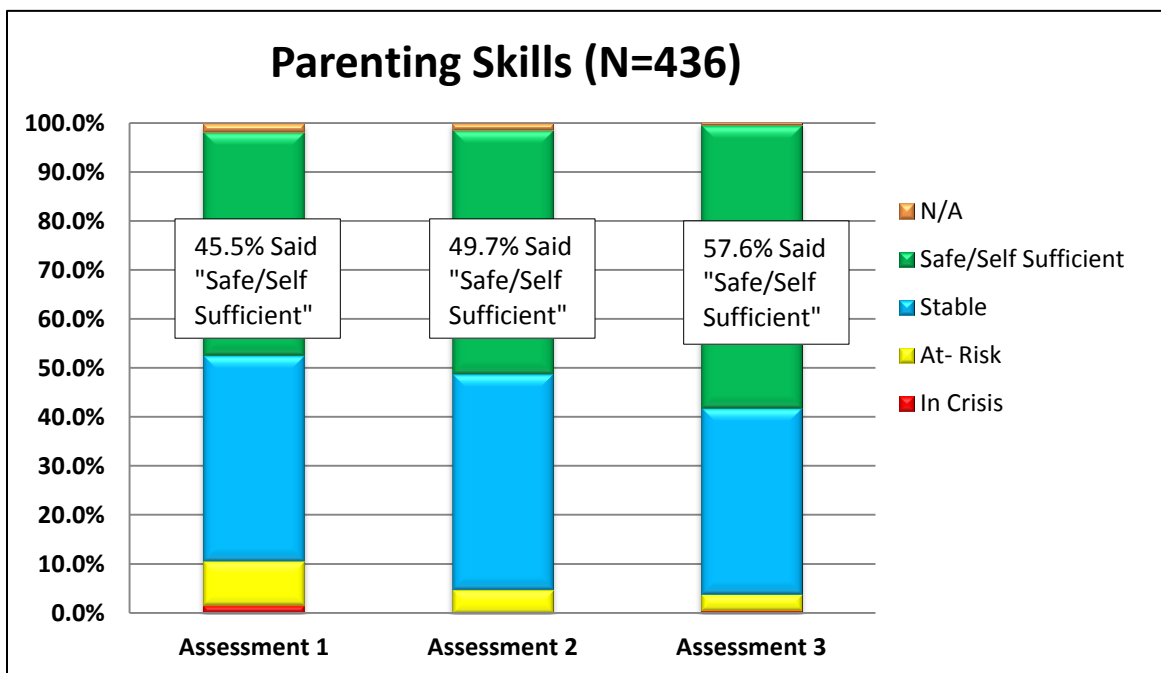
- Although no statistically significant gains in the family communication indicator were observed, around half of respondents indicated that their family communicates openly and respectfully at each assessment period.



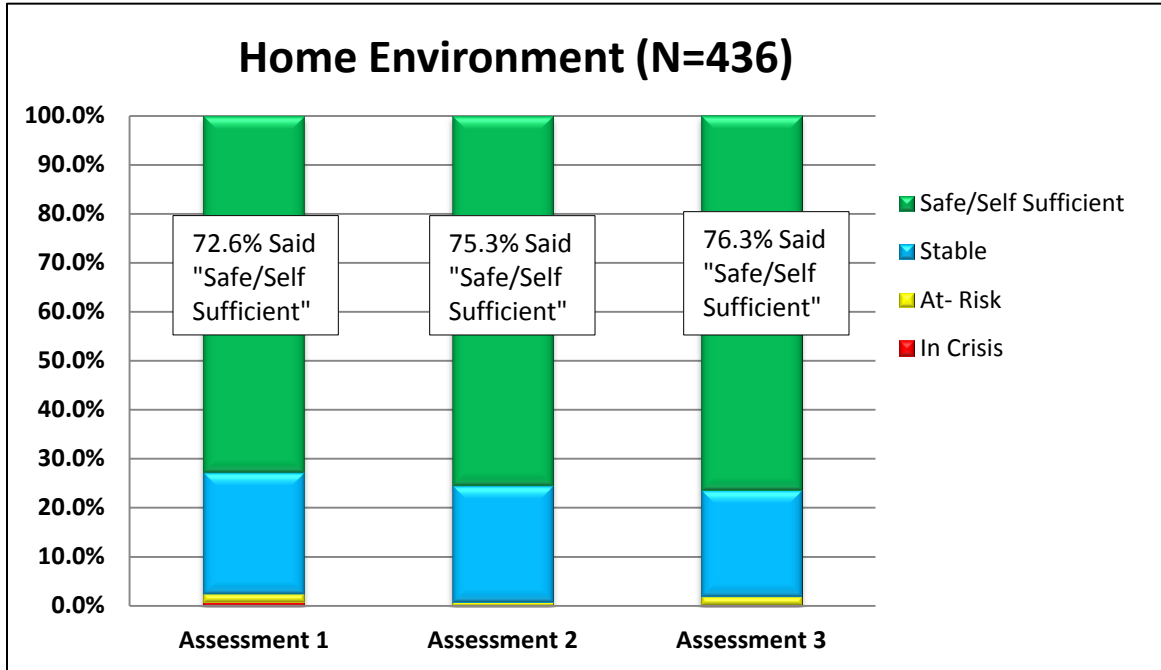
- Statistically significant increases were observed in the percentage of families who reported “safe/self-sufficient” levels of emotional well-being/sense of life value. At assessment 3, nearly half of respondents indicated that they were happy with their life situation.



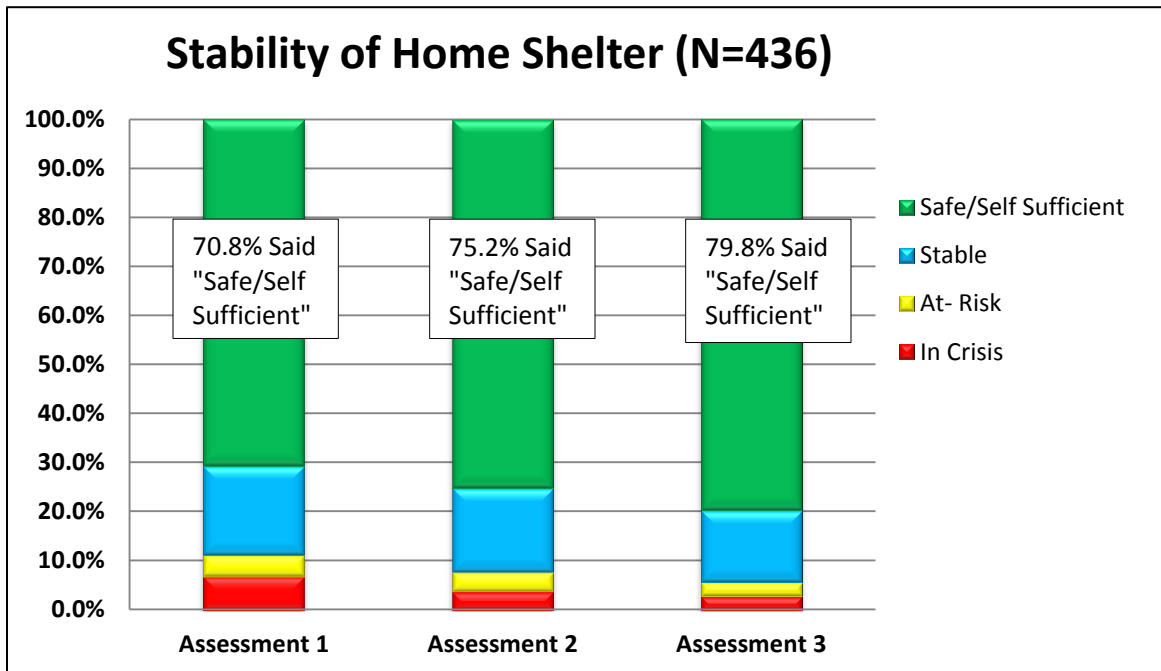
- From assessment 1 to assessment 3, statistically significant increases in the percentage of families who reported “safe/self-sufficient” nurturing styles, was observed. Overall, an increasing majority of respondents indicated that they are able to respond to their children’s emotional and physical needs with caring, love, and concern.



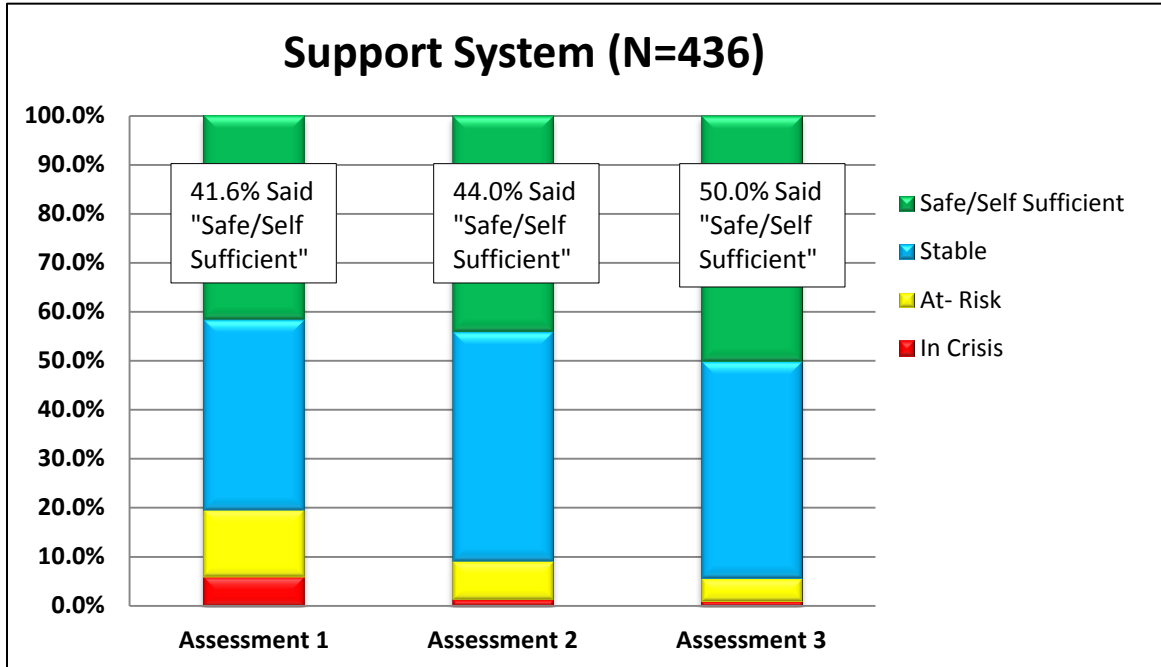
- Across each of the assessment periods, significant increases were observed in the percentage of families who reported having “safe/self-sufficient” parenting skills. By assessment 3, more than half of respondents indicated that they were very confident in their parenting skills.



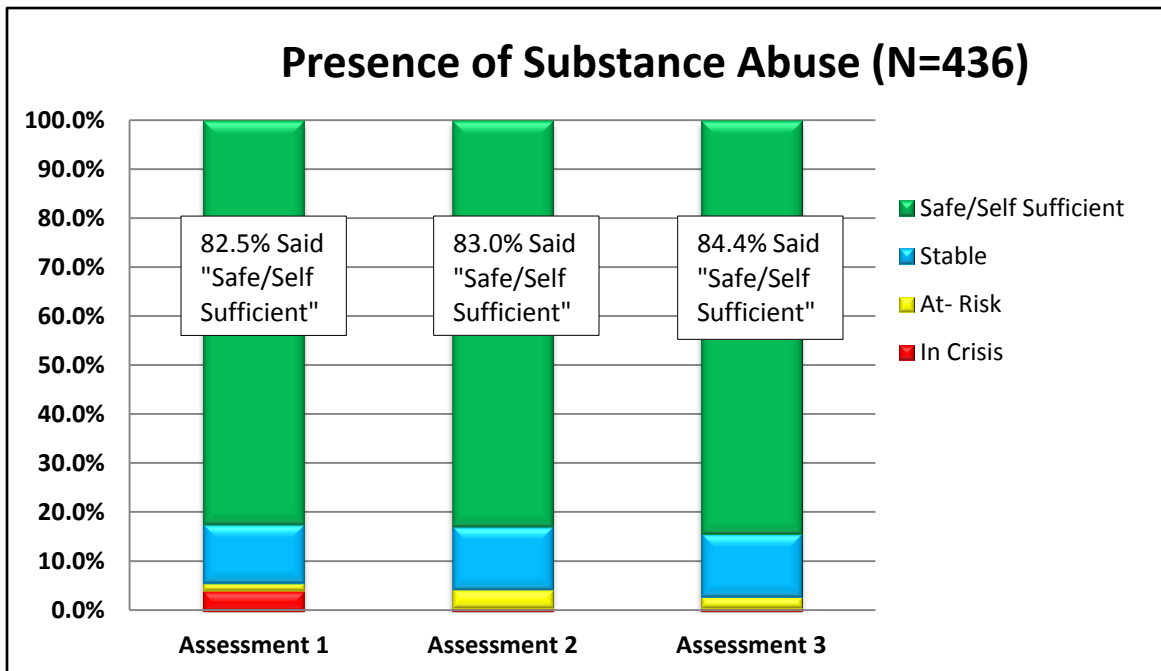
- Although no statistically significant increases in the stability of home environment were observed at this reporting period, more than half of respondents indicated that they had “safe/self-sufficient” home environments (e.g., home is safe, healthy, and well maintained). Since the vast majority of families were stable or better, there was not much room for improvement in order to show statistically significant change.



- Statistically significant gains in the percentage of families who reported having “safe/self-sufficient” home shelters. That is, nearly 80% of respondents indicated that they had lived in their current residence for at least 1 year at the third assessment period.



- Across the three assessment periods, statistically significant increases in the percentage of families reporting “safe/self-sufficient” support systems, were observed. At the third assessment period, half of respondents indicated that they had an extensive support system of family, friends and community resources.



- Statistically significant increases in the percentage of families who reported “safe/self-sufficient” presence of substance abuse between assessment 1 and 3. Majority of families reported no history of substance abuse.

Section II: Summary of Findings

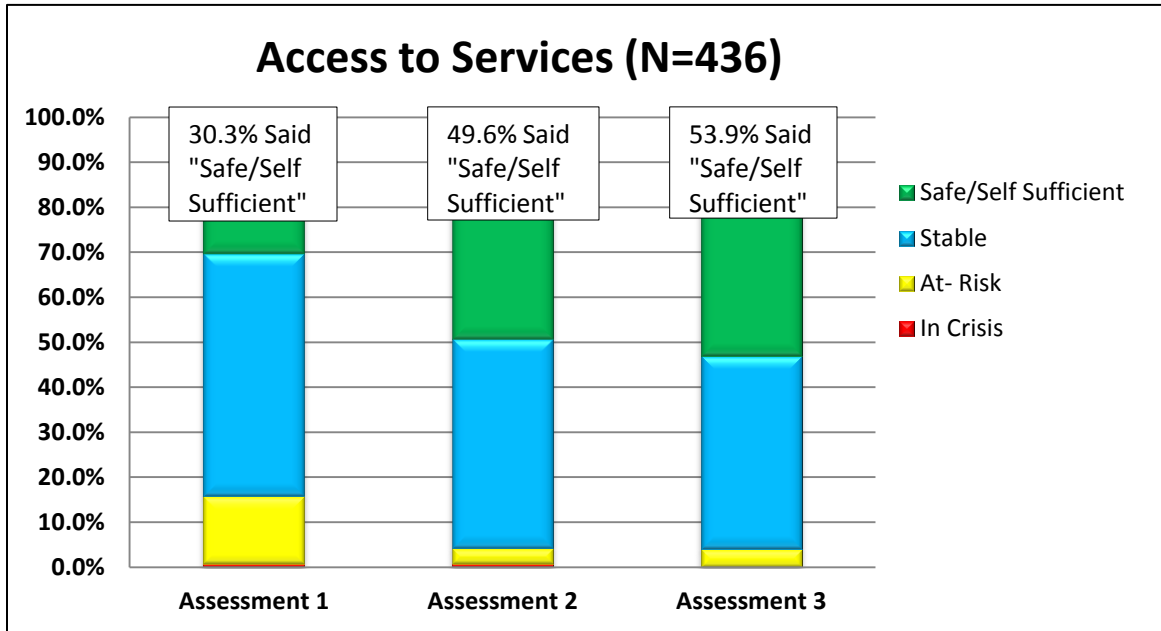
Areas Demonstrating Statistically Significant Improvement:

- Access to Transportation
- Child Health Insurance
- Community Resources/Knowledge
- Health Services
- Budgeting
- Clothing
- Employment
- Risk of Emotional/Sexual Abuse
- Child Supervision
- Appropriate Development
- Nutrition
- Emotional Well-Being/Sense of life Value
- Nurturing
- Parenting Skills
- Stability of Home Shelter
- Support System
- Presence of Substance Abuse

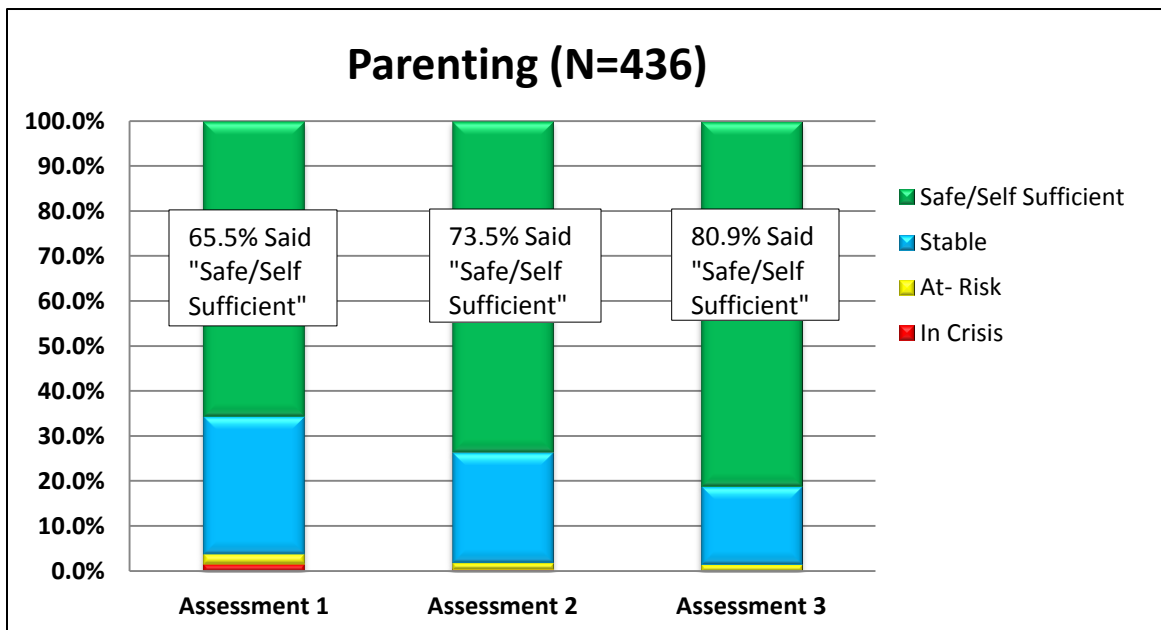
Areas Remaining the Same Over Time:

- Child Care
- Family Communication Skills
- Home Environment

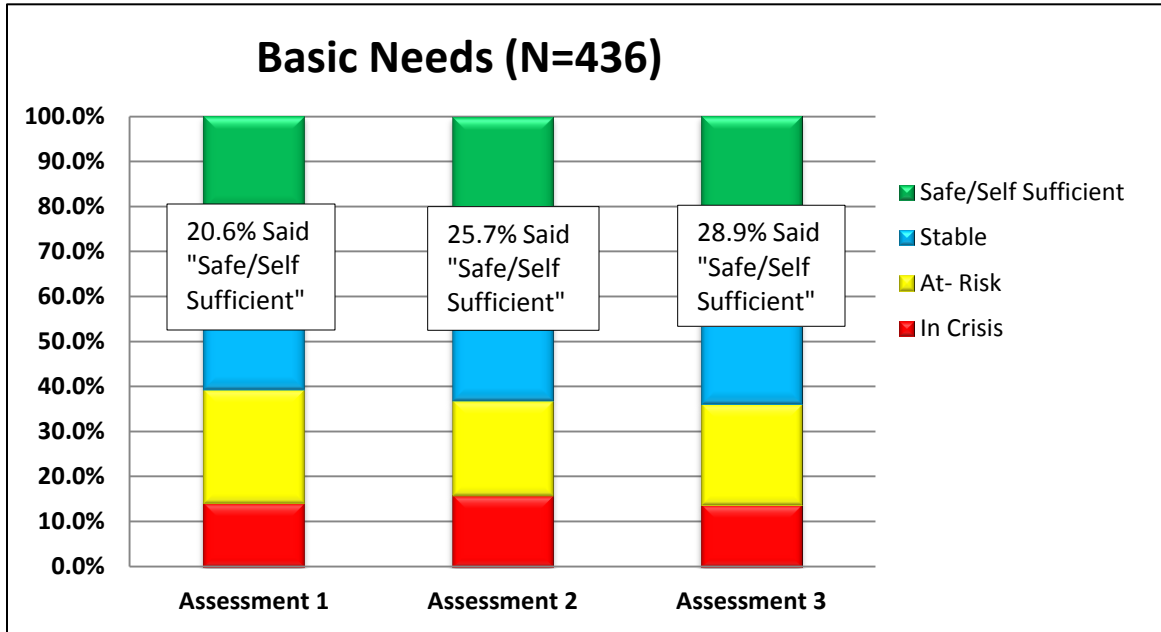
Section III: Changes in Family Functioning Domains Across Three Assessments



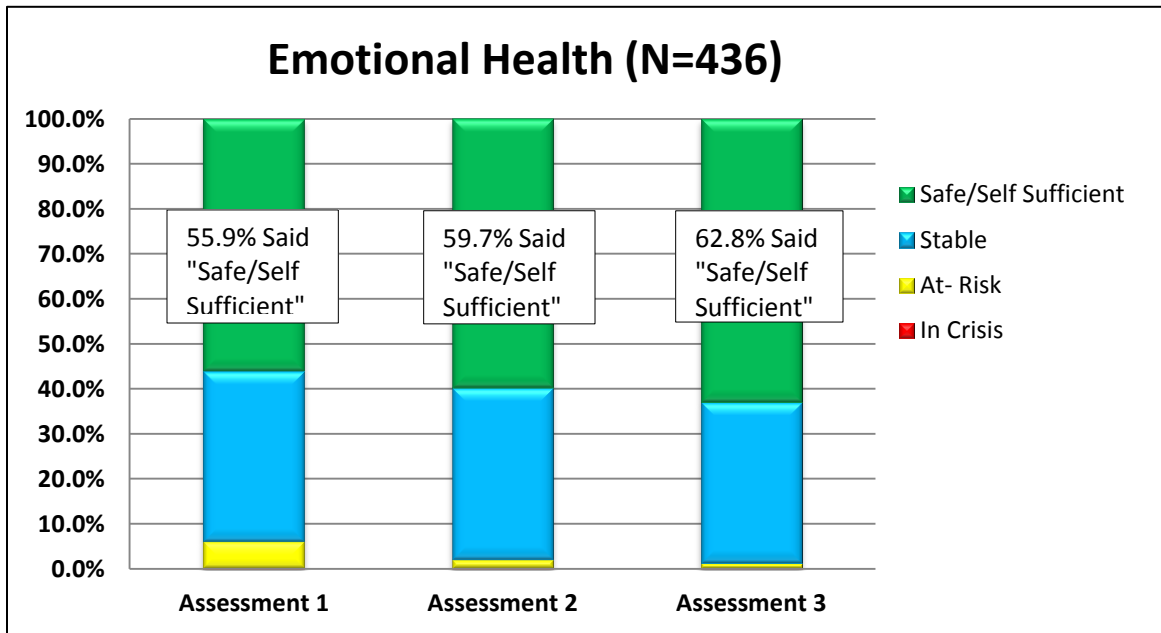
- Across each of the assessment periods, statistically significant increases in the percentage of families who reported having “safe/self-sufficient” access to services, was observed.



- Statistically significant improvements in the percentage of families reporting to have “safe/self-sufficient” parenting skills/knowledge, was observed between each of the three assessment periods.



- Statistically significant increases in the percentage of families reporting to have “safe/self-sufficient” access to basic needs, was observed between each of the three assessment periods.



- Between each of the assessment periods, statistically significant increases in the percentage of families who reported having “safe/self-sufficient” knowledge of emotional health, was observed.

Section III: Summary of Findings

- Each of the four domains (Access to services, Parenting, Basic Needs, and Emotional Health) demonstrated significantly significant improvements across each assessment period.